

On the beat

with PCSO 6522 Chris Brabrook

Have your say on how we police your area



Help us to deter burglars in North Herts this Autumn

- Help make your home secure as burglaries tend to increase once the clocks go back.
- We will be increasing patrols but please keep an eye on your neighbours
- Use timer switches on lights, consider investing in alarms, CCTV or doorbell cams, and report any suspicious behaviour.

It's a sad fact, but as the nights draw in, burglars take advantage of unlit homes to carry. The district was hit hard by burglars this time last year.

This year with more people working from home and fewer opportunities for people to go out due to the pandemic, it is likely that burglaries will not be at higher levels in North Herts like last year,

however, we do expect them to increase once the clocks go back. The team have plans in place which includes high-visibility and patrols. The team cannot be on every street 24 hours a day, I'd like to remind residents to make sure they lock their windows and doors including double locking PVC doors, use timer switches on lights, consider investing in alarms, CCTV or doorbell cams, and report any suspicious behaviour. Please also research crime prevention measures to protect your vehicles, sheds and out houses so that they are not tempting to an opportunist thief.

Being burgled is a real invasion of privacy and some victims find it hard to adjust afterwards, so it is best for everyone if we can prevent it happening in the first place. If you suspect a burglary is in progress, call 999, so that we have the best chance of arresting the offenders.

What exactly can burglary victims expect from the police?

When someone dials 999 to report a burglary, with intruders still at the address, all available police units will attend. Some officers will go to the address whilst back up officers will do an area search in the nearby streets and if appropriate will call on the assistance of the tri-force police helicopter and dog units to help track down the burglars.

When a burglary is discovered retrospectively, officers will attend and take a crime report from the victim and conduct an initial investigation, including statements, initial house-to-house enquiries, crime scene preservation and they will offer victim support. Scenes of crime officers may attend to obtain forensic evidence. The Local Crime Unit will take on the investigation to preserve evidence, see if there are any similarities to other burglaries and identify potential offenders. They will also gather CCTV and review information (intelligence).

(volunteers with full police powers). Some of the work is overt but a lot of it is covert, including the use of analysts to look back historically to predict where the hotspots may be, to help allocate police resources.

Farmers urged to remove GPS devices from tractors

- Thefts across Hertfordshire remain low, but there is a rising trend across the country.

Farmers urged to remove GPS devices from tractors

- Thefts across Hertfordshire remain low, but there is a rising trend across the country.
- Farmers are urged to remove devices when not in use.
- Report any suspicious activity to police.

Farmers are being urged to remove GPS devices from tractors when not in use, following an emerging trend in thefts across the region.

Further advice:

- Remove GPS guidance receivers, aerials and antenna globes from tractors when not in use and keep them in a secure locked place whenever possible
- Consider fitting security tethers or brackets to stop units being removed
- Mark your postcode on GPS units – either with a UV pen, engraving tool or forensic marking system
- Store machinery in locked buildings where possible
- Where locking machines away isn't an option, consider fitting mains or battery-operated alarms to cover around the perimeter of areas where machines are stored
- CCTV and intruder alarms will deter most thieves, but make sure they are checked regularly to ensure they work when you need them and they are placed where they won't be triggered by animals or foliage moving in the wind
- Record machinery serial numbers and photograph kit to help police identify stolen items and increase the chances of them being recovered
- Let employees know the security arrangements expected of them while working on the farm
- Join local 'Farm Watch' or social media security groups to keep in touch with rural crime trends in your area – visit OWL
- Encourage farm staff to be vigilant and report any suspicious behaviour or vehicles to the police on 101, or 999 in an emergency.

Hertfordshire Police

email: chris.brabrook@herts.pnn.police.uk Tel: 01438 757935

Ring 101 if you have suffered a crime or need police within a couple of hours. Ring 999 for an immediate response if you have just suffered a crime and for hare coursing.

Bedfordshire Police Contact:

For readers in Edworth, in emergency dial 999 or 112 from your mobile. Non emergencies ring 101, or 112 from a mobile.

Alternative Christmas Card Scheme Reminder

A last reminder that if you would like to participate in the Hinxworth and Edworth Alternative Christmas Card Scheme to please put your contribution in an envelope (with your name and address) and drop it to me at Bury End Farm, Ashwell Road, Hinxworth by Friday 4th December (names can't be added to the card after this date).

The charities this year are The Garden House Hospice and Letchworth Foodbank. Please make cheques payable to Garden House Hospice Care or Letchworth Foodbank and remember to write your name and address on the envelope.

Rachel Giles - rachel@gilesunlimited.co.uk

Ashwell Patients' Group

Useful Information if you have a minor injury

Minor injuries or illnesses are now being treated at The New QEII Hospital Urgent Care Centre in Welwyn Garden City. The centre is open 24 hours a day, every day of the year. Note however that children cannot be seen between midnight and 8am. During these hours parents should call NHS 111 who will give advice.

The Centre offers a walk-in service between 8am to 10pm for:

- Minor illness
- Muscle and joint injuries such as sprains
- Bites, stings, cuts, bruises and grazes
- Burns and scalds
- Objects stuck in ears or noses
- Minor eye injuries
- Suspected fractures and broken bones
- Minor head injuries.

After midnight adults can be treated for the above except for minor illness, fractures and broken bones and minor head injuries.

While it is important to follow Government advice to stay at home during this period remember that NHS 111, GPs and hospitals are still there to provide safe and appropriate care.

Banish those Covid Blues

We are living in strange times and not surprisingly people are finding the going tough. Professor Tim Spector, who has been studying the pandemic very closely, has come up with 5 tips to help us reduce stress and anxiety. Here they are:

- Be kind to yourself and others - Research shows that kindness and mental health are related so find ways to reach out to others (if only with a smile) and cut yourself some slack too!
- Check your sources of information – Avoid fake news by consulting trustworthy sources such as the NHS, the World Health Organisation (WHO) or Centres for Disease Control or Prevention (CDC).
- Keep in touch with the outside world using social media, chats, phones, video or even old fashioned letters.
- Focus on things you can control rather than the “what ifs”. There isn't much point in worrying about the future and things beyond our control. Instead focus on what you can control right now – and have a good day today!
- Bring some structure to your day. Planning and maintaining a schedule can help make things feel more normal and reduce anxiety. So REGULARLY – plan and eat healthy meals, take exercise, relax and de-stress, enjoy activities like crafts/ listening to music/ gardening/ cross-wording etc., connect with friends and family, spend time outside connecting with nature, and go easy with social media and following the news!

These are things we can all do. They are easily achieved and cost nothing. So take the good Professor's advice and see how well it works for you!

Hinxworth & Edworth WI

November Meeting

As is becoming the usual way of doing things at the moment the Hinxworth and Edworth WI November meeting was conducted via Zoom. A record number of members joined the meeting – brilliant to see so many on-line. Sylvia was back in the chair this month and got the meeting underway on time and with no hiccoughs. The WI has taken out a full subscription to Zoom in

the hope of making things easier for members and speakers to log on and this certainly was true of this meeting and, fingers crossed, for our future meetings. Sylvia took the members through the usual WI business and catch-up on previous meeting minutes and also the forthcoming December meeting which will of course have a Christmas theme including a Secret Santa.

Sylvia then introduced the speaker for the evening – Jemma Dell – to talk and demonstrate the art and skill of paper piecing. Jemma explained to everyone that English Paper Piecing (also known as Mosaic Piecing or Mosaic Patchwork), is a method of hand piecing using paper templates to stabilize fabric and historically the technique originated in England in the 1700s. English paper piecing is an age-old method of making quilts that is still hugely popular today and projects made this way are easy to do and highly portable – a sort of ‘sew on the go’ hand craft.

Jemma then went on to talk and also demonstrate on screen how to get started on paper piecing ourselves. We had all been given instructions in advance of the meeting so we were well prepared with our own papers and material, needle and cotton and could follow Jemma's demo in situ and some very credible results were on show from the members at the end of the meeting. Finally, Jemma showed us some beautiful completed pieces that she had made, such intricate patterns and designs ranging from tiny pin cushions to full size quilts – all from bits of paper and scraps of material so a great way to use up left over fabric.

The next meeting – via Zoom – is on the 10 December at 7.30. Keep an eye on your emails for more details nearer the date.

Chrisi Hook Chris Hook

Fundraising for The Garden House Hospice

Sew Busy (The Hinxworth & Edworth sewing group) have been busy making chocolate filled Christmas Tree hangers in a fundraising effort for the Garden House Hospice. These are available to buy from outside the gate of 8 The Barns, Lower Farm, Edworth or please contact Katrina & she can arrange delivery.



Handmade chocolate Christmas tree hangers for sale

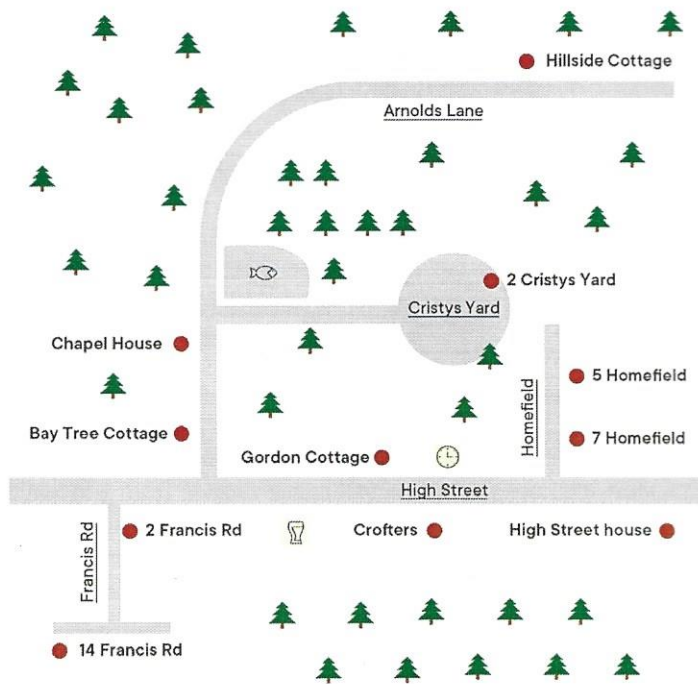
Christmas Puddings, Robins and Santa Hats stuffed with Ferrero Roche – suggested donation £1

Christmas trees stuffed with Chocolate Orange – suggested donation £3

Hinxworth's Advent Windows

Thank you to everyone who has volunteered to bring some festive cheer to the village by decorating their windows. The map below confirms who is participating and where they are so that you can plan your festive walk!

Windows can be viewed from 6pm on 23rd December.



Christmas Church Services

Sadly, much of our traditional pattern of Worship over Christmas will have to change this year due to restrictions resulting from the COVID-19 pandemic. At the time of going to press we still do not know whether we will be able to worship in church, but we very much hope we can. Our present plan is:

- 6th Dec. 10.15 am Family Service, St. Nicholas, Hinxworth
- 13th Dec. 4.30 pm Lessons and Carols, St Nicholas, Hinxworth
4.30 pm Lessons and Carols, St Vincent, Newnham
- 20th Dec. 9.15 am Parish Communion, St Nicholas, Hinxworth
- 24th Dec. 11.30 pm, Midnight Communion, St Vincent, Newnham
- 25th Dec. 10 am, Communion and Carols, St Nicholas, Hinxworth
- 27th Dec. 10.45 am Benefice Communion, St Mary's, Ashwell

As soon as we know what the government will allow us to do in December, information will be available at

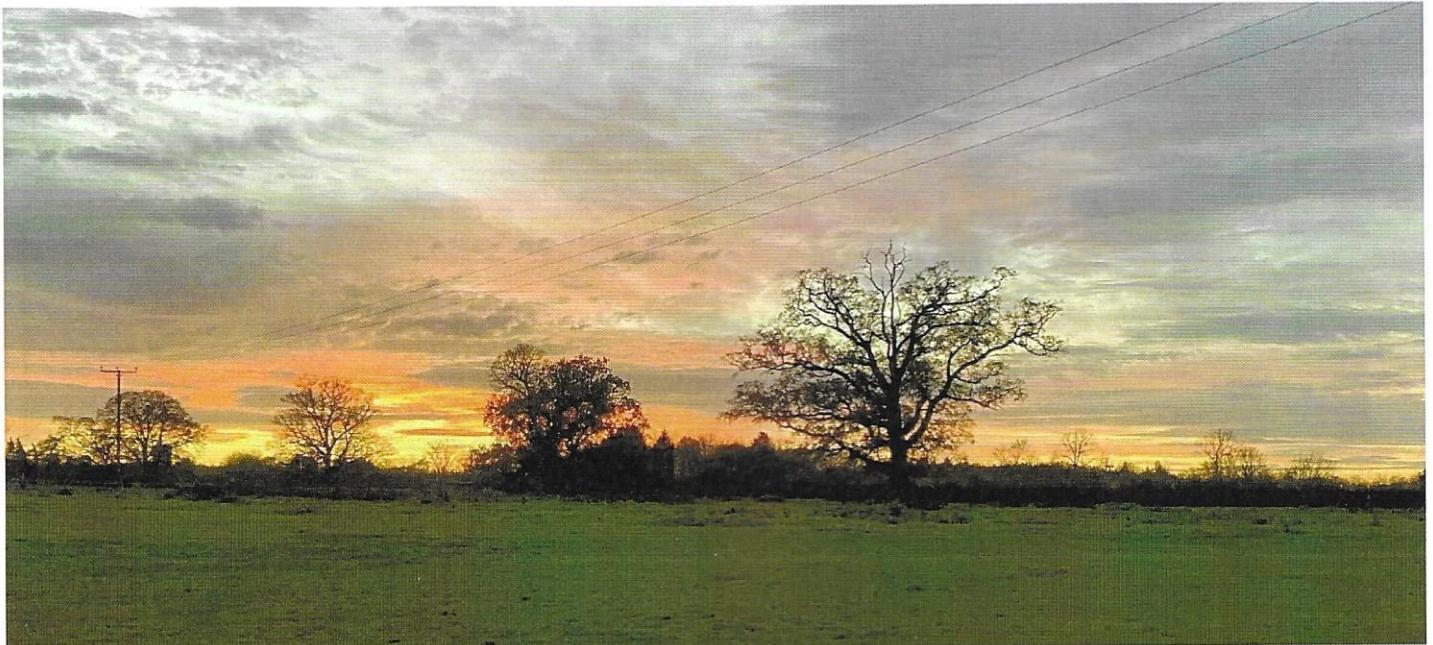
<http://stmarysashwell.org.uk/>

All Ashwell services will be available at

<https://tinyurl.com/stmarys-zoom>

Or you can use the Meeting ID: 848 3055 8684 Passcode: 277646.

Sunset taken by Katrina Hoskins over Edworth. If you have any local sunset pictures please send them to the Village Voice



A final word from the Parish Council

The Parish Council extend their deepest sympathy to Lucy and her children Sarah, Jack and Harry for the loss of Mike. It has left many people in our Village in shock.

Mike was a much-respected member of the Parish Council. He was always very considered when expressing his views and his calmness and kindness always shone through. He was keen to take over the Village Voice when Patrick "retired" and did a fantastic job.

We are delighted to hear that Lucy wants to take over the baton as Editor of the Village Voice and continue Mike's great work.

We would like to thank Patrick for stepping in so quickly to ensure that the Christmas Information went out.

In this issue, Lucy has completed the work that Mike began, which is truly amazing considering what she and family are going through.

Richard Cobb, Nick Tiffin, Tony Lloyd and Wendy Kitchener

Copy Date: Please send all copy / pictures for January edition by December 20th to E-mail: villagevoice3@gmail.com